



The Source

San Diego Geographic Information Source Newsletter
December 2007

Also In This Issue...

[Featured User Article - Fire History Monitoring by David Toney](#)

[Data on DVD](#)

[Landbase, Warehouse and Services Report](#)

[Road Updates Aided by SD Fire](#)

[Agencies Help SanGIS Enhance Landbase](#)

[ArcGIS Tips](#)

[Bon Voyage, Drew](#)

[Quartic Solutions Helps SanGIS](#)

[Reminders and Contacts](#)

[Happy Holidays and Thank you](#)

Featured User Article

Landbase, Warehouse and Services Report

Landbase

SanGIS continues to ensure that the landbase (parcels, lots, roads) you access through SanGIS SDE contains the most timely and topologically and attribute-accurate information. During the first quarter of FY 2008, SanGIS performed the following updates to the landbase:

- Subdivision Maps Processed: 111
- Lots Added: 609
- Parcels Added: 3846
- Parcels Split: 324
- Roads Added: 503
- Landbase Corrections: 60
- Parcels/Lots Processed to Goal: 99.7%
- Roads Processed to Goal: 100%

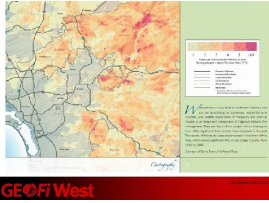
Warehouse

Since July, the following seven new Layers were added to the Data Warehouse on SanGIS SDE:

- PLANNED_LANDUSE_SG
- FIRESTORM_2007_DAMAGES_CN
- FIRESTORM_2007_ASSIST_CENTER
- HLTH_WOMEN_INFANT_CHILD_PROG
- HLTH_IMMUNIZATION_REGISTRY_LOC
- HLTH_CNCIL_CMTY_CLINICS
- DIST_LIBRARY_SERVICE_AREAS

Some 39 other layers were also updated during that time and 33 new SDE user accounts were created.

For a complete listing of all [SanGIS SDE Layers](#) available to our members please click the above link.



The currently featured GIS article on our website is:

[Long Term Fire History Monitoring and Analysis](#)

by

David Toney
GISP and GIS
Manager

GEOFidelis West and
MCB Camp
Pendleton

Abstract

Wildland fire is a way of life in southern California and can be devastating to businesses, residential communities, and wildlife. Application of frequency and interval models is an important focus of regional wildland fire management. The San Diego Fire History map series, as seen in the 2007 ESRI Map Book, showcases significant fires in San Diego County, from 1910 to 2003. This [presentation](#) will describe the process used to produce this map, and explain how and why this process is important. Some of the

Services

SanGIS's Mapping and Data Services continue to provide GIS products to our members and to the public. We also provide online access to our GIS Data. For the first quarter of FY 2008 the following services were performed.

- Custom Mapping for our Members: 28
- Custom Mapping for the Public: 269
- Data Extracts for our Members: 15
- Data Extracts for the Public: 68
- FTP Logons: 4378
- FTP Data Downloads: 9032

Dont' forget, as a member of SanGIS, City and County staff may request free custom maps and data extracts from SanGIS. We also offer lamination and mounting for a nominal cost of materials only, and response time is always fast. Please contact Erma (EBarnett@sandis.org) or Peg (PGodden@sangis.org) for more information.

SanGIS Road Layer Updates Aided by San Diego Fire

SanGIS has developed a custom ArcEngine application that allows San Diego Fire GIS staff to make edits directly to key features of the SanGIS Roads layer. Features that can be edited include road type, fire driveability, block range annotation, road segment aliases, and road intersection types. Edits by SD Fire are automatically received by SanGIS for incorporation into our landbase's QC and validation procedures prior to weekly SDE posting of the entire updated of the landbase.

Encouraged by feedback from the SanGIS BPR to develop this new application, SanGIS and the City have streamlined components of the Road layer updating process, not only saving SanGIS effort but also providing efficient updates to the Roads layer for improved 911 dispatch. San Diego Fire is responsible for using SanGIS data in the 911-dispatch process for the City of San Diego and other jurisdictions, so timely, updated Road information is critical to that process. The San Diego County's Sheriff's Department GIS staff will also soon be making use of the application to provide similar enhancements for their areas of jurisdiction.

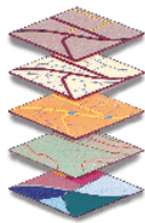
Thanks to extend to: Laura Brenner, *San Diego Fire*; Drew Dowling, *formerly of SanGIS*; Timo Luostarinen and Rob O'Donnell, *Quartic Solutions*; Frank Jessie, *SanGIS*; and, Frederick Latham, *Networld Solutions* for their expertise and time in developing and testing the application.

data used in this analysis can also be downloaded through SanGIS's [Download GIS Data](#).

"Thank you, David, for sharing your methodology in this very interesting presentation, and for contributing data back to SanGIS."

If you have a GIS article or presentation incorporating SanGIS data and would like to share your experience with others through The Source and on the SanGIS website, please contact Andrew Abouna at AAbouna@sangis.org

Need Data?



Get SanGIS Data on DVD!

SanGIS now provides a convenient DVD set containing the 245 public-facing data layers in uncompressed shapefiles and

Agencies Help SanGIS Enhance Landbase Accuracy

A key role for SanGIS is to maintain landbase accuracy for the City of San Diego and the County of San Diego. However, overall regional landbase accuracy is highly dependent upon completeness in all jurisdictions across the county. Consequently, Frank and Andrew of SanGIS have been coordinating with other agencies and jurisdictions to obtain essential landbase inputs.

During the past several months, the agency has received, and in most cases already incorporated, landbase-related information for Miramar Naval Air Station, Marine Corps Base Camp Pendleton, City of Chula Vista, and the City of Escondido. Information from the City of San Marcos is also on the horizon, as are other jurisdictions. Caltrans also continues to be a regular provider of information. This initiative is helping SanGIS maintain our 99% or better landbase integrity goal.

We thank the following individuals for their valuable contribution to this effort: David Toney, *GEOFi West*; Tom McDowell, *City of Chula Vista*; Dan Hildebrand, *City of Escondido*; Mettja Kuna, *City of San Marcos*; Pat Landrum, *Caltrans*; and, Bob Short, *SanGIS*.

ArcGIS Tips

1. The Find feature let's you search for an address even if you haven't set up a Locator. By default it now goes out to the Internet and hits an ArcWeb Service and geocodes your address. You can also find Places with a worldwide gazetteer.
2. Have state or county data in your map, and hate when you hit the Zoom to Full Extent because you are really just working in San Diego County? Go under the Data Frame Properties, Data Frame tab. At the bottom you will see "Extent Used by Full Extent Command" - if you select Other and hit the Specify Extent... button you can select a specific layer to use as the Full Extent, or a selected feature within a layer, or the currently visible extent, or even type in the coordinates of the extent.
3. If you are in the office, use the [web-base Help](#) system as it is always updated and current.

Thank you Tim Craig of ESRI for these very help tips!

Bon Voyage and Thank you, Drew

metadata.

As a service to you, our members, and to the public, SanGIS hosts a public-facing FTP site with 245 select layers from our internal SanGIS SDE Data Warehouse. The public-facing data are free to download through our [Download GIS Data](#) page. However, the data are stored as compressed shapefiles requiring a network connection, time and effort to download, before uncompressing. The new 5-DVD set provides a fast, convenient and mobile way to access the data.

The DVD set is available free to City and County staff, or for a nominal cost recovery fee of \$75 for non-members. The DVD set can be refreshed with the same quarterly frequency as the website data.

For more information, contact Peg at PGodden@sangis.org



Web Links

[SanGIS](#)

Earlier last month, after 5 years of service to SanGIS and the County of San Diego, Drew Dowling left the agencies to explore other areas of the world. Drew had been with SanGIS since 2002, initially as map creator before quickly advancing to applications programming to support SanGIS's internal systems and other applications. "Thank you, Drew, for your valued and creative input over the years"!

Quartic Solutions Helps SanGIS

SanGIS is pleased to have recently contracted with Quartic Solutions LLC for their services and expertise in database administration and GIS programming. Quartic Solutions is a local GIS consulting company with broad experience in the government sector. We welcome Timo Luostarinen and Rob O'Donnell of Quartic Solutions who will be providing the support to SanGIS in the two aforementioned areas, satisfying the duties of two recent staff departures at SanGIS.

Reminders

Report Data Errors

For landbase errors please contact Frank Jessie at FJessie@sangis.org or 858-874-7010. For other data errors please contact Peg Goddent at PGodden@sangis.org or phone 858-874-7005. *Or you may use the SanGIS Online Forum to report errors.*

SDE/Oracle Accounts

New SDE/Oracle accounts can be obtained by contacting Peg Goddent at PGodden@sangis.org or phone 858-874-7005. She can also change your password or delete accounts.

Online Forum

The SanGIS [Online Forum](#) is a resource for announcements, data lists, newsletter, reporting data errors, and other information. We encourage you to post your questions or requests using the forum. Thank you to those who have been providing us information for landbase corrections.

Website

The SanGIS [website](#) has undergone some changes recently, with more to follow. Let us know if it still provides what you need and if you have any comments. Please continue to use it as a resource for obtaining regional GIS information.

Best Wishes for a Happy and Safe Holiday Season!

[City of San Diego](#)

[County of San Diego](#)

The year of 2007 is rapidly coming to a close, but it was a very dynamic and successful year for SanGIS. Staffing changes occurred, a wealth of process documents were developed, a Business Process Reengineering was successfully conducted, a regional workshop was held to discuss ways to regionalize and expand the agency, audits were completed, improvements in IT infrastructure are planned, custom applications were developed, processes were enhanced, NHD Stewardship coordination, and customer service remained high. These successes are attributable directly to you and the staff of SanGIS - thank you!

We appreciate the cooperative effort seen in the BPR and on-going workshops and meetings. This collective effort combined with our focused attention on common goals will bring us continued success in supporting your GIS and data needs through 2008.

Sincerely,

Andrew Abouna
Executive Director
SanGIS

SanGIS | 5469 Kearny Villa Road, Suite 102 | County Mail O-349, City Mail 16 | San Diego | CA | 92123